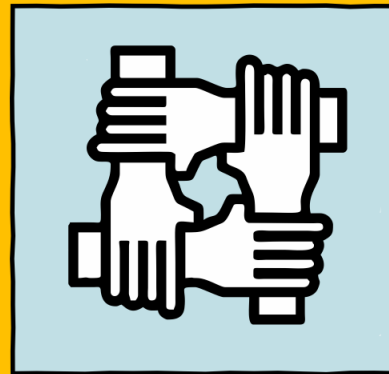


# Groundswell

Out of homelessness



**Different strategies of ensuring elderly clients are safely and appropriately accommodated**



Erasmus+

# Overview of the session

3pm – 3:05pm	Introduction to presenters Introduction to Groundswell
3:05pm – 3:15pm	Overview of case study
3:15pm – 3:20pm	Explanation of group activities
3:20pm - 3:45pm	Group breakouts to discuss challenges and solutions
3:45pm – 3:55pm	Each group to feedback main priorities
4:00pm	Case study update

# Who we are

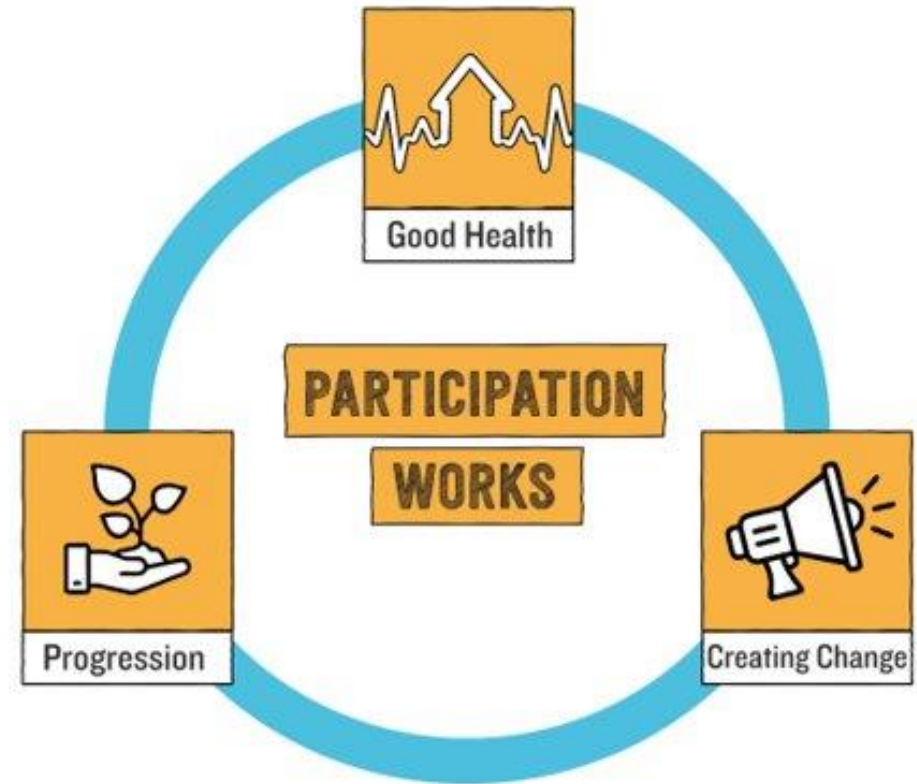
Ashleigh Knowles

Adrian Godfrey

Jackie Russell

# Who Groundswell are

Groundswell exists to enable people who have experience of homelessness to create solutions and move themselves out of homelessness – to benefit of our whole society.



# Case Study - background

## Background:

Annie is in her early 60s. She has a diagnosis of early onset dementia and also alcohol-related brain damage from years of alcohol dependency. Although she no longer drinks, she continues to smoke heavily.

Annie has no living relatives or people supporting her. She lives alone in independent accommodation after many years of rough sleeping. Her tenancy sustainment worker, from another charity, visits every 2 weeks to make sure she is managing to maintain her accommodation, pay bills etc.

Recently, Annie has had daily visits from carers, provided by social services. Her care package includes 2 or 3 visits per day to help with meals, cleaning and washing and dressing. Annie's declining health means she struggles with basic tasks like feeding herself and using the toilet. The care agency can use Annie's state pension to buy things she wants or needs and must keep a receipt in a file.

\* This is an anonymised, composite case study, based on our experiences but not on a single client.

# Case Study - issues

Two Groundswell Homeless Health Peer Advocacy (HHPA) workers visit Annie at midday and this is their report:

Annie was visibly hungry. When I looked around the kitchen for food, I found that the fridge, freezer, and cupboards were bare and very dirty. There was out of date juice in the fridge and soiled clothes in the washing machine. I am concerned about whether the morning carers gave her any food.

I also observed that Annie was dressed in soiled, badly fitted clothing, and her skin was dirty. There was no hot water. I understand the carers are supposed to be assisting with washing/cleaning and I wonder how this has been taking place. The rest of the flat was filthy, urine on the floor of the bathroom, soiled furniture, and the mattress on the floor of her room was without sheets or covers.

A receipt for men's and women's clothing was found in Annie's file. None of the items were found in Annie's flat.

When checking the care logbook, I saw entries made for future dates and times, these were signed by carers.

# **Group discussion – what would you do?**

Discuss the challenges and solutions

Discuss resources available to help Annie, how to deal with her situation.

After the discussion, each group will share their main priorities

# Case Study - outcome

Annie took herself to the hospital emergency department, telling staff she had stomach pains. She could not recall how she got there or why she was there. Nothing medically wrong could be found but we informed the staff nurse of Annie's vulnerable situation and the safeguarding concerns. Annie was linked with the Pathway team at the hospital, and it has since been agreed that Annie's current living situation poses too high a risk for her to be discharged at this time. (A Pathway team is a specialist team helping mainstream hospital teams support people experiencing homelessness. <https://www.pathway.org.uk/about-us/what-we-do/model-overview/> )

Annie is still in hospital, she has been helped to have a wash and a haircut and is looking great! She was unrecognisable and I walked straight past her on the ward, after a year of knowing Annie, it was the first time I'd seen her sleep.

Annie is now staying long term at a Care Home. If the placement becomes permanent, her tenancy can be relinquished. I have spoken to the Care Home and they said Annie has settled in well there. She can have visitors and we continue to visit her every other week.